

edition 34

# adhesives

by POLYVINE®



the ultimate  
range of adhesives

For a complete range of Polyvine products, to watch any of our many how-to videos, or to read or download product data sheets, go to our website at [www.polyvine.com](http://www.polyvine.com)



## Polyvine adhesive technology

Polyvine has a strong reputation among trade professionals for innovative and high-performing products - designed for maximum performance and ease of use.

### the adhesive range

Polyvine adhesives are easy to apply and have all the features that trade professionals demand from spirit based glues but with all the advantages of water based polymer technology, including superb joint strength, much shorter tack and bond times. Wherever the highest level of specification is required Polyvine's adhesive technology will provide the answer.

### wood glues

The ultimate in modern, cross linked, high solids, water based liquid resin polymer. These ultra bond glues provide extreme adhesion, producing bonds stronger than the wood itself.

### cascamite

The original wood adhesive - the 'go to' brand for structural wood working. Cascamite reaches bond strength very fast, enabling it to be used for load bearing and laminating. Use internally and externally where high bond strength, gap filling, water resistance is required.

### cascaphen

The ultimate waterproof adhesive - offering maximum strength whilst standing up to **total immersion in water**.

page	5	6	7	8	11
	contact	cascarez GP	cascarez fast	cascamite	cascaphen
bonds hard & softwood	✓	✓	✓	✓	✓
bonds highly resinous wood	×	×	×	×	✓
bonds most materials	✓	×	×	×	×
for exterior use	×	×	✓	✓	✓
water resistant	✓	×	✓	✓	✓
waterproof	✓✓	×	✓✓	✓✓	✓✓✓
structural strength	✓	✓	✓	✓✓	✓✓✓
sandable	×	✓	✓	✓	✓
paintable	✓	✓	✓	✓	✓
tack time	10 mins	1-2 hours		3hrs at 20°C	10-30 mins
cure time	24 hours	8 hours		when hard	4 hours
colour when dry					
gap filling	×	×	×	✓✓✓	✓
fire resistant	×	×	×	✓✓	✓✓✓



#### approximate US equivalents:

250ml - 8.8oz, 500ml - 17.6oz, 1 litre - 35.2oz

220g - 7.7oz, 500g - 17.6oz, 1.5kg - 3.3lb, 3kg - 6.6lb



## cascatact fast

### solvent free contact adhesive

A solvent free, water based, spreadable adhesive that makes high strength, water resistant permanent bonds. Dries clear, without the fire and fume risks associated with traditional solvent based adhesives.

#### ideal to use for

- textiles • rubber • plastic laminate • wood
- plywood • chipboard • painted surfaces
- plaster • metals (prime with metal primer)
- cork • leather • canvas • expanded polystyrene

#### unique qualities

- non-flammable • fume free
- high strength • water resistant
- much better coverage than solvent systems

tack time: 10 minutes • open time: up to 4 hours

cure time: 24 hours

available in: 250ml, 500ml, 1 litre



## cascarez GP

general purpose

An extra strong wood adhesive that's ideal for interior use on all types of wood, setting stronger than the wood itself. This synthetic resin emulsion adhesive has been specially developed for wood bonding operations involving both softwoods and hardwoods.

Dries to a clear finish that can be sanded, painted or stained.

### ideal to use for

- wood • hardboard • chipboard • block board
- cardboard • paper • textiles

### unique qualities

- bonds stronger than timber itself
- dries translucent • use on all woods
- can be polished • easy to apply
- freeze/thaw stable • does not produce undue wear on woodworking tools • water based

tack time: 1-2 hours • cure time: 8 hours

available in: 125ml, 250ml, 500ml, 1 litre



## cascarez fast

bonds in 10 minutes

The ultimate fast grab wood adhesive - the exceptionally high solids content in this polymer emulsion ensure that it is the fastest, strongest adhesive of its type.

Used correctly it will bond most woods in 10 minutes for fast assembly work and fast grab. It is ready to handle in 30 minutes. Dries clear. Bonds stronger than the wood itself in less than 2 hours!

### ideal to use for

- cabinet making • general joinery • doors
- window frames • furniture • kitchens

### unique qualities

- water resistant to D3 classification
- dries clear • interior/exterior use • low timber staining • creep resistant • contains no inert fillers • suitable for radio frequency (RF) cure
- water based

tack time: 10 minutes • cure time: 2-4 hours

available in: 125ml, 250ml, 500ml, 1 litre

# cascamite structural wood adhesive

Specifically formulated for exterior joinery exposed to weather. This adhesive produces a bond stronger than the timber itself.



**cascamite**  
powdered resin wood glue

Cascamite, the original wood adhesive, is specially formulated for exterior joinery exposed to the weather. The powder system enables extremely good gap filling properties ensuring water does not enter the joint, producing the strongest bond possible, stronger than the wood itself.

It reaches bond strength very fast, enabling it to be used for load bearing and laminating. Use internally and externally where high bond strength, gap filling, water resistance is required.

#### ideal to use for

- exterior joinery • windows • doors • gates
- garden furniture • boats • shopfitting
- interior joinery • kitchens • worktops
- bathrooms • veneering • laminating

#### unique qualities

- gap filling • load bearing • clear glue line
- non staining • does not discolour hardwood
- fast bond build up • mould resistant

tack time: 18 hrs at 10°C, 7 hrs at 15°C, 3 hrs at 20°C

cure time: cured when hard

available in: 250g, 500g, 1.5Kg, 3Kg



## cascaphen

for continuous immersion

This super-professional, two part glue has been specially developed for waterproof exterior use, being impervious to water. Developed for the marine industry, this glue is so waterproof - boat builders use it. For external use where extreme weathering will take place.

### ideal to use for

- structural timber • laminated roof members
- timber in constant contact with water
- timber in contact with the ground • arches for bridge work • concrete formers • marine craft construction • preservative treated timber
- difficult timber eg teak

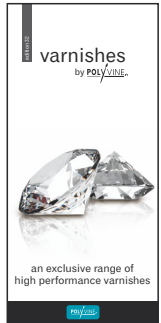
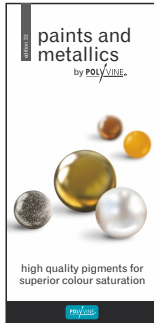
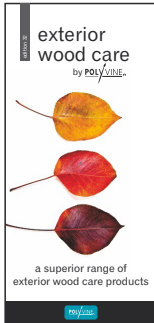
### unique qualities

- totally waterproof • fire resistant to class 0
- withstands continual immersion in water

tack time: 10-30 minutes • cure time: 4 hours

available in: 670g

Look out for our leaflets in store detailing other Polyvine product ranges



For a complete range of Polyvine products, how-to videos, product data sheets, stockist locator, stockist resources, decorative artists and useful links, visit our website:

[www.polyvine.com](http://www.polyvine.com)



Polyvine Limited  
Vine House, Cheddar Business Park  
Wedmore Road, Cheddar BS27 3EB  
United Kingdom

Tel +44 (0)1934 740305  
[info@polyvine.co.uk](mailto:info@polyvine.co.uk)



MANUFACTURED  
IN THE UK BY POLYVINE

[www.polyvine.com](http://www.polyvine.com)